

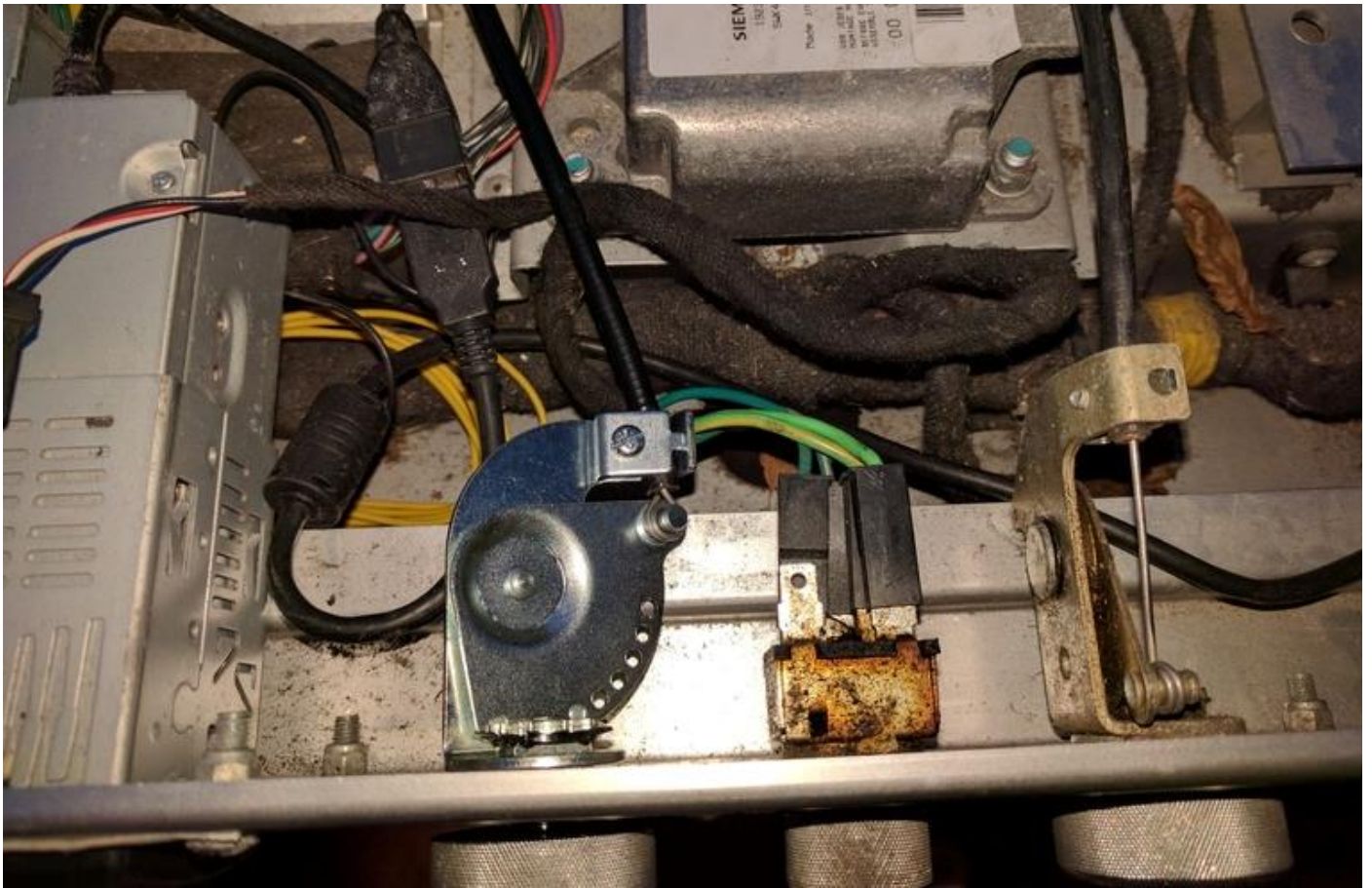
1. Remove dash plates, dash screws and dash
2. Remove heater knob (pull)
3. Undo nut (14 mm deep socket)
4. Unplug red piggy back spade connector and connect green wire (black plug) directly to switch.



5. Pop bonnet, remove washer fluid tank for better access, unplug cable coming from cabin under heater (or cut if older, hard wired version)



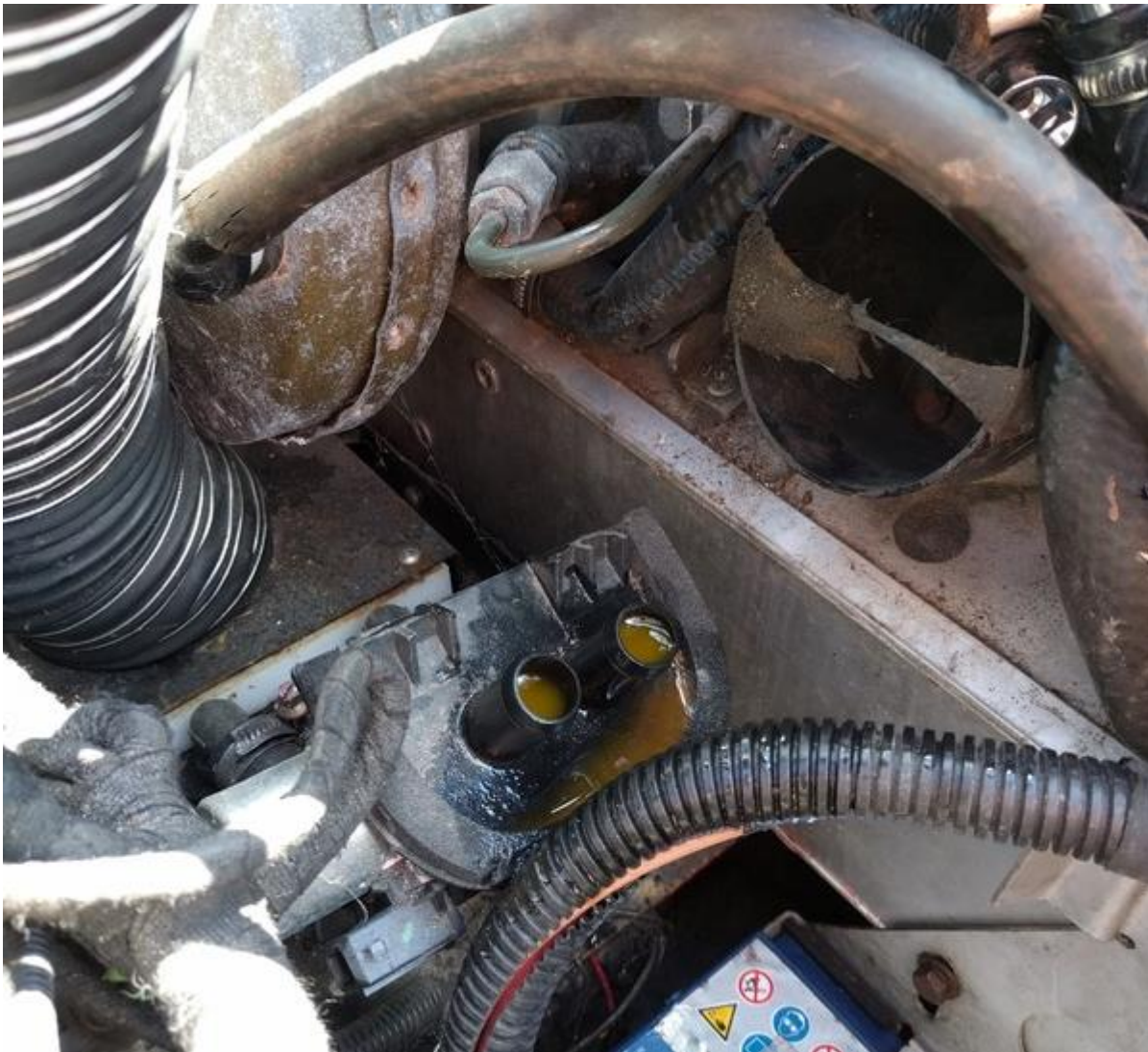
6. Pull cable out from cabin side.
7. Attach one cable end to the rotary controller, feed down hole to heater (same hole that controller wire came out of) and fit rotary controller turned as clockwise as possible (see photo)



8. At heater end, attach cable end to mechanical valve



9. Disconnect pipes going to heater solenoid valve



10. Connect mechanical valve.



11. Top up coolant tank, if needed. Done.